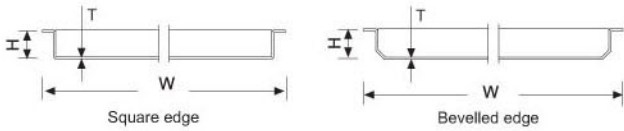


FD LAY IN CEILING TILE

Material: aluminum or galvanized steel
 Surface treatment: powder coating or pre-painted
 Thickness: 0.5-1.0mm
 Color: RAL color and wooden grain colors are available for choice
 Plain and perforated tile are optional, for perforated tiles with black felt, sound absorption, for more patterns please refer to P10-P12

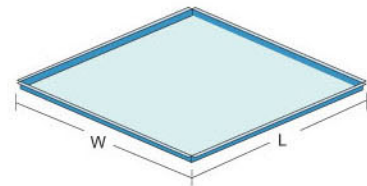
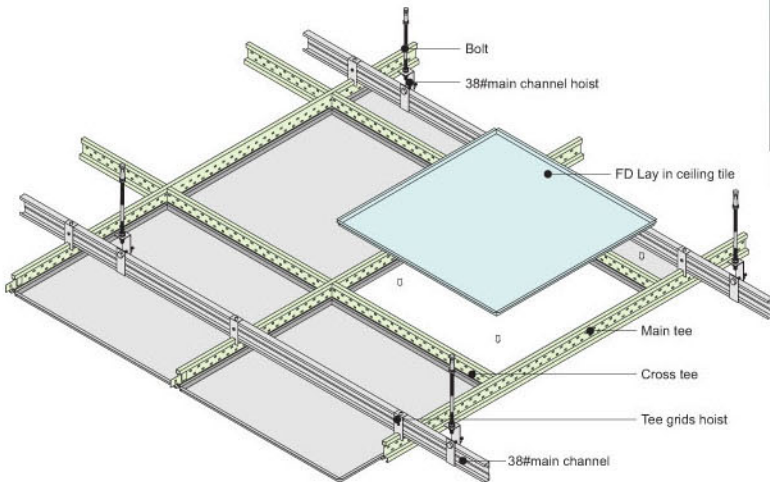


FD LAY IN CEILING TILE

Unit:mm

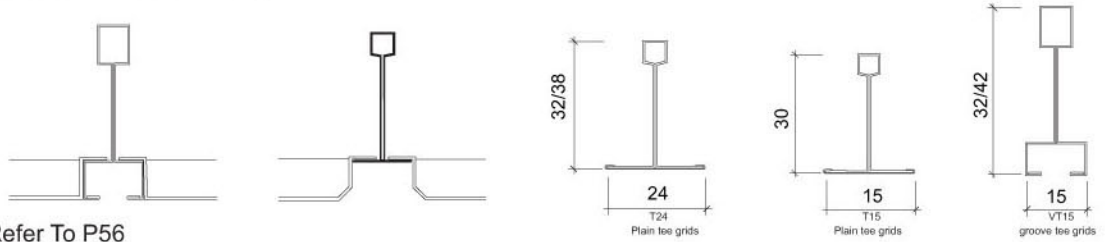
Item No.	Surface Size (W x L)	Tray Size (W x L)	Height	Thickness
FD01	583x583	595x595	8	0.5-1.0
FD02	575x575	595x595	10	
FD03	583x583	605x605	12	
FD04	593x593	605x605		

(other sizes on request)

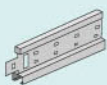


Structure and installation for FD Lay in ceiling

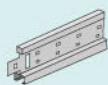
JOINT DETAILS OF T-GRID AND TILE



Tee Grid Please Refer To P56



VT15 GROOVE MAIN TEE GRIDS
 Material: pre-painted G.I. steel
 Spec.: 15x32/42x3000mm
 Thickness: 0.3mm or on request



VT15 GROOVE CROSS TEE GRIDS
 Material: pre-painted G.I. steel
 Spec.: 15x28x3000mm
 Thickness: 0.3mm or on request



T24 PLAIN MAIN TEE GRIDS
 Material: pre-painted G.I. steel
 Spec.: 24x32/38x3000mm
 Thickness: 0.3mm or on request



T24 PLAIN CROSS TEE GRIDS
 Material: pre-painted G.I. steel
 Spec.: 24x23/28x3000mm
 Thickness: 0.3mm or on request



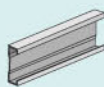
L SHAPED WALL ANGLE
 Material: G.I. steel
 Surface treatment: Powder coating
 Spec.: 20x20/24x24mm
 Length: 3000mm or on request
 Thickness: 0.3mm or on request



BOLT
 Material: steel
 Surface treatment: galvanized steel
 Length: 1000mm or 3000mm on request
 Thickness: 6/8mm



MAIN CHANNEL CONNECTOR
 Material: steel
 Surface treatment: galvanized steel
 Height: 41/53mm
 Thickness: 1.0mm



38# MAIN CHANNEL
 Material: steel
 Surface treatment: galvanized steel
 Spec.: 38x12mm
 Length: 3000mm or on request
 Thickness: 0.8mm



TEE GRIDS HOIST
 Material: steel
 Surface treatment: galvanized steel
 Height: 100mm
 Thickness: 0.6mm or on request



38# MAIN CHANNEL HOIST
 Material: steel
 Surface treatment: galvanized steel
 Height: 95/105mm
 Thickness: 1.0mm